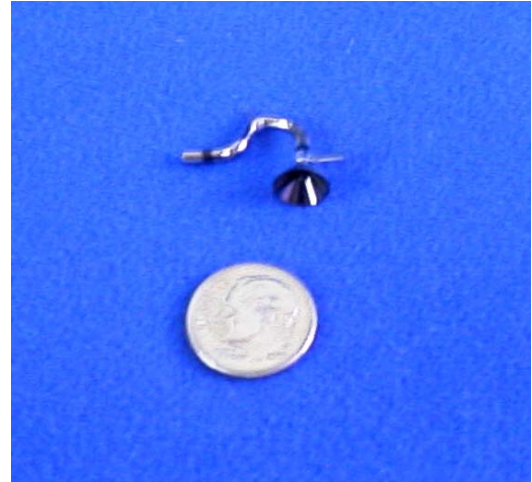


Miniature Channeltron® Electron Multipliers

- Compact
- Single-Piece Construction
- Ideal for Portable Low-Cost Instruments
- Mounting Available in Various Configurations
- Analog or Pulse Counting Applications
- Gain Greater than 10 Million
- Low Noise

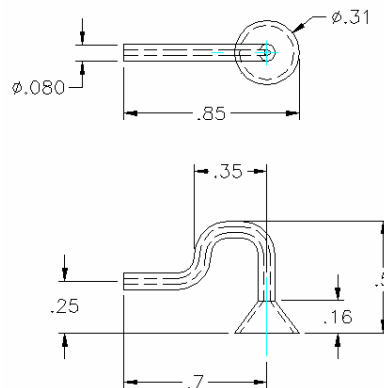


Typical Mechanical and Electrical Characteristics

Application:	Analog or Pulse Counting
Maximum Operating Pressure:	5.0×10^{-5} torr
Maximum Specified Operating Voltage:	3,000 V
Bias Current at 3,000 V:	10 to 55 μA
Resistance (For Reference Only):	55 to 85 MΩ
Minimum Gain at 3,000 V:	1.0×10^7
Maximum Dark Current at 3,000 V:	1.0×10^{-12} A
Maximum Dark Count at 3,000 V:	1 Count/Second
Maximum Linear Output Current (Typical):	10% of Bias Current

Typical Applications:

- Leak Detectors
- Portable Mass Spectrometers
- Dedicated Sensors
- Environmental Sensors
- Industrial Sensors



For additional information, contact BURLE Electro-Optics, Inc., via email sales@burle-ee.com or visit our web site at www.burle.com. Telephone if in the U.S.A. or Canada 1-800-648-1800, elsewhere, 1-508-347-4000 or Fax 1-508-347-3849

Channeltron, BURLE, and BURLE INDUSTRIES are registered trademarks of BURLE Technologies, Inc. Marca(s) Registrada(s). All other trademarks are the property of their respective owners. The information furnished is believed to be accurate and reliable, but is not guaranteed and is subject to change without notice. No liability is assumed by BURLE INDUSTRIES for its use.

